

PUBLIC NOTICE – LAND AND BUILDING FOR SALE

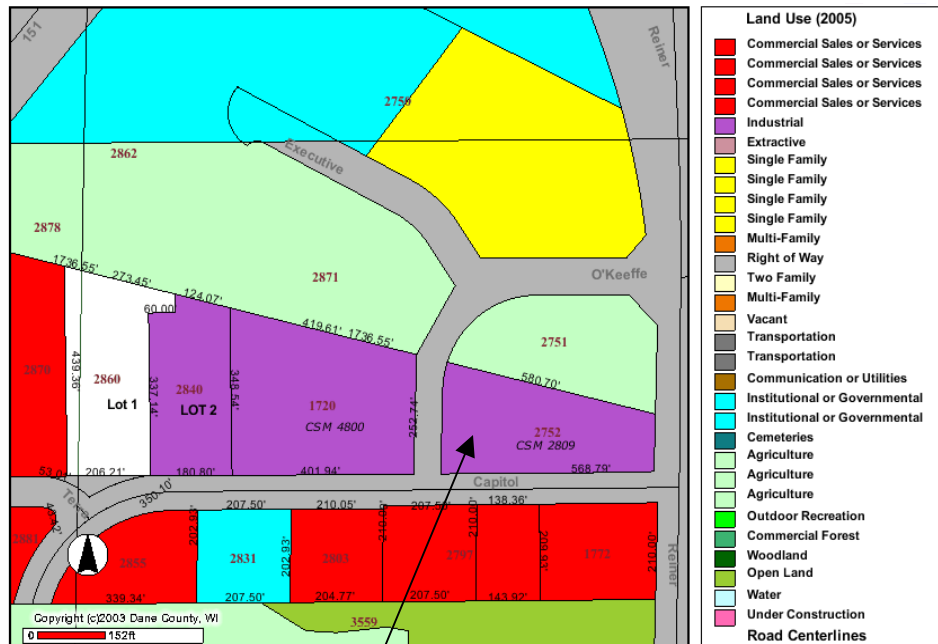
The Department of Transportation is soliciting sealed bids for the sale of a 2.5 acre site and accompanying 24,840 sq. ft. steel frame structure located at 2752 Capital Drive, Sun Prairie, WI. The property is improved with a 24,840 square foot steel frame structure, asphalt parking area, fixtures and landscaping.

*Property location: Southeast of the intersection of STH 151 and Rhiner road, located in the NE ¼ of the SE ¼ of Section 14, T8N, R10E, city of Sun Prairie, WI. Access will be via Capital Drive.

*Minimum bid is \$1,423,900.00

For more information and the official bid package, call John Fandrach at (608) 266-0786.

Wisconsin Department of Transportation
Attn: John Fandrach
4802 Sheboygan Ave.
Madison, WI 53707



2752 Capital Drive. Sun Prairie. WI



View from Reiner Rd



View from Capital Drive (West)



View from Capital Drive (North)