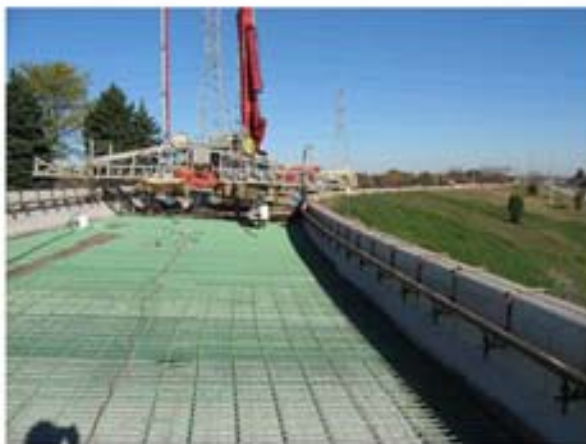


Zoo Interchange Corridor Study
ID 1060-33-01
Milwaukee County
Southbound to Eastbound
Ramp Bridge Rehabilitation
Fall 2007



**DETERIORATION LIKE THIS, REQUIRING
REHABILITATION, WILL BECOME MORE
FREQUENT AS THE STRUCTURES AGE.**



Exhibit 9
Bridge Rehabs
Zoo Interchange